

# Darlingtonia

Summer 2026

June-August

Newsletter of the North Coast Chapter of the California Native Plant Society  
Dedicated to the Preservation of California Native Flora

## 2026 Wildflower Show Report

By Carol Ralph

This year's Wildflower Show was notable for being a place where plant people were enjoying other plant people, as well as enjoying the wildflowers. The "upstairs room," hosting organizations and topic displays, resounded with animated discussions, like a party. The main hall, where the hundreds of flowers stood in diverse arrays, was quiet and respectful, like a church. Our welcome table volunteers tallied 842 visitors, including 100 school kids and accompanying adults. Some of the visitors shared words of appreciation: "This is my favorite thing to do. I do it every year." "I'm new to the area, and I learned so much!" These are simple words that represent deep feelings and confirm that this enormous volunteer effort is furthering our goals of fostering appreciation of native plants.

The upstairs room, coordinated by Jessica Heiden, featured a brilliant display of invasive plant species by the botanist team of the National Park Service showing visitors some of the beautiful but destructive flowers in our natural areas and our yards. Redwood Invasive Plant Eradicators, Sequoia Park Ivy League, and Volunteer Trail Stewards provided opportunity for visitors to join volunteer efforts to control some invasive plants. The North American Butterfly Association and Humboldt Beekeepers Association opened doors into the worlds of butterflies and native bees, co-evolved partners of native plants. Northtown Books offered for sale a diverse selection of wild plant-related books to help people on the path to discovering and knowing these plants. Ciencia para Todos provided a dissecting microscope and interesting pieces of flowers to look at.

The art dimension of this year's show was especially rich, as **Annie Reid** led ArtShare April online activities through our website and coordinated Little Free Wildflower Art Galleries. The culmination was the "most bumpin' Art Night of all time," where flowers in the show were honored by the close attention demanded to render their images into two dimensions on a sheet of paper.

**David Callow** deserves special recognition for many years of doing two behind-the-scenes, important jobs for the show. By updating, refurbishing, planting, retrieving, and storing the outdoor signs he has contributed greatly to our publicity. For set-up and clean-up he developed an efficient process for filling and emptying the jars, and he helps retrieve and store the many tubs of jars. If you have a pick-up truck, you could join David, and Tom Allen, in this essential task.

Sharing these wildflowers with school students has always, for all 44 years, been an important part of the Wildflower Show. School groups rotate through three activities: flower dissection, native people uses of native plants, and the showroom. **Shirley Laos, Grace Milburn, Michelle Kamprath,** and **Carol Krueger** deserve special thanks for presenting these activities six times during the day! If you would like to join this educational effort, tell us!

Every task, large or small, that went into the Wildflower Show was important. We sincerely thank the approximate **84 volunteers** who gen-

*(Continued on page 3)*

## Inside this issue:

Wildflower Show Report	1
Field Trips	2
President's message	4
Field Trip Report: Clam Beach- Strawberry Creek end of Hammond Trail	5
Nursery and Plant Sale Thanks	6
Volunteers in Action	8
McKinleyville Botanical Garden	9
Field Trip Report – Eel River Canyon Preserve	9
Wetland Garden	9
Member's Corner	10

## Find out what's happening:

- Visit our website:  
[northcoastcnps.org](http://northcoastcnps.org)
- Visit our Facebook page:  
[facebook.com/  
NorthCoastCNPS](https://facebook.com/NorthCoastCNPS)
- Sign-Up for Activity  
Notifications by emailing:  
[northcoastcnps.groups.io  
/g/activities](mailto:northcoastcnps.groups.io/g/activities)
- Visit Instagram page:  
[instagram.com/  
northcoastcnps](https://instagram.com/northcoastcnps)

## Field Trips

### **June 6-7, Titlow Hill Rd. and Forest Highway 1 Botanical Exploration**

Saturday, June 6, and option for Sunday June 7. Meet at 8:30 a.m. Saturday at Pacific Union School, 3001 Janes Rd., Arcata. We'll head east on Hwy. 299 to explore several spots along Titlow Hill Rd. and further south along Six Rivers National Forest Highway 1 and adjacent roads. We plan to visit additional locations on Sunday, including Cold Spring and Horse Mtn. Trip Leaders: Peter Warner, Rita Zito. This trip has a camping option for Saturday night at Boise Creek Campground, 2 miles west of Willow Creek. Vault toilets, but potable water availability is uncertain, so bring enough for camping. **Registration is essential if you're planning to camp Saturday night.** Go to [www.recreation.gov/camping/campgrounds/233142](http://www.recreation.gov/camping/campgrounds/233142) Camping fee is \$10/site (\$5 with federal Senior Pass); \$5/extra vehicle. To reserve camping Saturday night: Register for either day (or both). Peter: [phytopagan@sonic.net](mailto:phytopagan@sonic.net); (707) 235-2713, no later than May 29.

**June 14, Sunday. Brown Creek-South Fork Day Hike.** This loop route in Prairie Creek Redwoods State Park goes up from Newton B. Drury Parkway to Rhododendron Trail, through rich forest, 3.1 miles. Columbia lilies and Indian pipe are possible Meet at 9:00 am at Pacific Union School (3001 Janes Rd., Arcata) or 10 a.m. at the trailhead. Bring lunch and water. Tell Carol you're coming: 707-822-2015/[theralphs@humboldt1.com](mailto:theralphs@humboldt1.com).

### **July 4, Saturday, 9:00 a.m. to 1:00 p.m. Arcata Community Forest.**

Meet at 9:00 a.m., Diamond Drive access to the Forest, about 0.9 mile from LK Wood; park on the street. This will be a slow-paced, moderately strenuous, hilly walk of about 5.5 miles. We'll observe trees, shrubs, and herbs. A forest map is available on the Avenza app. Bring water and snacks. Peter: [phytopagan@sonic.net](mailto:phytopagan@sonic.net); (707) 235-2713.

**July 25, Saturday, 8:30 a.m. to 4:00 p.m. Yurok Trail to Coastal Trail & return to Wilson Creek Beach.** Meet at 8:30 a.m. at Pacific Union School (3001 Janes Rd., Arcata), or 10:00 a.m. at Yurok Loop Trail parking area along Hwy. 101 about 1 mile north of Trees of Mystery. An out-and-back walk of 3-4 miles. Coastal flora and sweeping views along the Del Norte coast will be ours for the day. Be prepared for sun, fog, mist, rain, and wind. Bring water and food. Contact Peter for more information and to register: [phytopagan@sonic.net](mailto:phytopagan@sonic.net); (707) 235-2713.

### **August 8, Saturday, 9:30 a.m.–1:30 p.m. College of the Redwoods, Campus Tree and Plant Tour**

Join Elaine Hanson for a conifer identification walk at College of the Redwoods. The first half-mile features 10 conifers native to California. The basic pond loop is about one mile, with an optional additional mile through CR's native garden and Nature Trail loop for those interested. Attendance is limited to 15; reserve a spot by contacting: [e.m.hanson@att.net](mailto:e.m.hanson@att.net). Meet at 9:30 a.m. at Pacific Union School, 3001 Janes Road, Arcata to carpool, or at 10:00 a.m. on the north side of the main parking lot at CR.

Link to the StoryMap, information on CR campus trees: <https://storymaps.arcgis.com/stories/aa7d16b5900c4780aab22d1fa1c5d7f7>

### **August 14-16, Friday-Sunday: Del Norte Redwoods, Coastal, and Wetlands Diversity**

Friday, 9 a.m. Meet at Valley West Shopping Center, off Giuntoli Lane by the coffee kiosk. We will visit Grove of the Titans and Stout Grove in Jedediah Smith State Park on Friday, then to the Tolowa Dunes-Lake Earl area on Saturday. On Sunday, options include a trip inland to walk at Stony Creek in Gasquet, or stay along the coast for a walk at Pt. St. George or south to the Endert Beach area – destinations flexible. If you intend to join this trip, arrange accommodation now in the Crescent City area. Please contact Peter for information on places to stay and to register: [phytopagan@sonic.net](mailto:phytopagan@sonic.net); (707) 235-2713.

**Sept. 19, Saturday, 9:00 a.m. - 3:00 p.m., Headwaters Elk River Trail.** (Further details in Darlingtonia, Fall issue) **Turning Over a New Leaf: An Appreciation of Leaves through Science and Artistic Creativity.** . Contact Peter for registration: [phytopagan@sonic.net](mailto:phytopagan@sonic.net); (707) 235-2713, or Rita for art information: (707) 443-2868.

## Workshops

### **August 15, Saturday. Introduction to Asteraceae**

This is a full-day workshop on Asteraceae identification, using species that occur on the North Coast. The workshop begins with a focused lecture on composite morphology and diagnostic characters. It proceeds with guided dissection and practical step-by-step interpretation of differences. Following lunch, the evolutionary radiation of the Asteraceae will be narrated. Throughout the day, work with the Jepson key will be supplemented with discussion of tribal-level patterns, common pitfalls, and practical field recognition tips. Cost: \$175 CNPS members; \$225 non-CNPS members; Students; \$35. Register via [northcoastcnps.org](http://northcoastcnps.org).

## Volunteer Opportunity

### **McKinleyville Botanical Garden in Hiller Park.**

2026 Workday Schedule April through October: Second Fridays & Fourth Sundays, 2 – 4 p.m. Rain cancels.

By Jane Fusek

Volunteer or visit any day to enjoy this lovely community-driven garden. It's a good place to meet and learn with other nature lovers. See which native plants do well in McKinleyville and witness the various pollinators. Post photos to iNaturalist and get help identifying plants, insects etc.. See the garden's project at [www.inaturalist.org/projects/mckinleyville-botanical-garden-hiller-park](http://www.inaturalist.org/projects/mckinleyville-botanical-garden-hiller-park). Go west on Hiller Road to parking lot for Hammond Trail/Soccer Field/Dog Park. Garden is adjacent to playground.

(Continued from page 1)

erously gave their expertise and time to make it happen. (If your name should be on here and is not, please tell me!)

**Collectors: Gabe Cashman** (Coordinator), Sydney Carothers, Andrea Taylor, Nancy Brockington, June James, Eva Sideris, Joan Carpenter, Tony LaBanca, Georgia Hamer, Kaden Ashdown, Bianca Hayashi, Mary Ann Machi, Steve Conger, Susan Penn, Ned Forsyth, Clare Dooley, Mackenzie Bray, Tristan Cole, Katrina Henderson, and Bridger.

**Flower processors and IDers: Larry Levine**, Andrea Taylor, Peter Warner, Eva Sideris, Eli Kallison, Elaine Hanson, Emelia Berole, Sonja Huff, Ned Forsyth Laurie Lawrence, Kelsey MacDonald, Joseph Saler, Tony LaBanca, Gabe Cashman, Sydney Carothers, Q, Galena, Bianca Hayashi, Kim Massey, Rosemary, Britney Newby, Dylan, Ben Lardiere

**Maintaining the database and cards**, and generally defending collection quality: **Larry Levine**

**Pop-up Talks:** Paul Wilson, Joann Kerns, Chelsea Allen, Fay touchstone, Jordan Nolan, Rook Saibley, Kimber Falls

**Planning Committee:** Andrea Taylor, Carol Ralph, Larry Levine, Annie Reid, Carl Klarner, Maddie Lopez, Jessica Heiden, Joann Kerns, Paul Wilson, Steve Underwood

**Upstairs Room Coordinator:** Jessica Heiden

**School Visits:** Katy Allen, Grace Milburn, Shirley Laos and sister, Michelle Kamprath, Carol Krueger, Carol Ralph.

**Art:** Annie Reid, Patty Sennott, and some others

**Publicity:** Paul Wilson. **Signs:** David Callow. **Flier design:** Larry Levine. **Flier distribution:** Genia Garibaldi and others.

**Refreshments for volunteers:** Joann Kerns

**Staffing the welcome table and the CNPS booth:** Jessica Heiden, Nancy Brockington, Kathryn Johnson, Rita Zito, Katy Allen, Lee Mitchell Brown, Sonja Huff, Steve Underwood, Deborah Nelson, Noah Lurtz, Olivia Brock, Annie Ried, Wallace, Carol Moné, Elaine Hanson.

**Room set-up and clean-up:** Carl Klarner & team, Jessica Heiden, Trey, Laurie Lawrence, David Callow, Stuart Gorman, Amelia, Katy Allen, Tom Allen, Sarah Conway & team, Courtney Otto, Steve Underwood, Kim Marsden, Jules Davis, Lilian Powell, Q, Galena, CJ Ralph, Fae Touchstone, Susie, Dan, Andrea Taylor, Karen Isa, Frank Milelczyk, Heidi, and Jason.



A quail sculpture created with English ivy stems by Adrian Klarner during the show studies the differences among *Brodiaea*, *Triteleia*, *Dichelostemma*, and *Dipterostemon*.

Family portrait of the Broomrape Family, *Orobanchaceae*.



Did you know there is a flower named Puccoon?

This year featured good examples of the parasitic Ground Cone (*Kopsiopsis strobilacea*).



**How would you like to join us in 2027?**

## **The Work of the Steering Committee**

By Paul Wilson

In November, I started presiding over the Steering Committee of the North Coast Chapter of the California Native Plant Society. Now that we are entering into Summer Recess, I've been asked to give an account of our activities.

The Steering Committee is the governing body of the Chapter. The appropriateness of the name is debatable. It's mostly the elected officers, the Chairs of the various other committees, and the Coordinators of various functions. The number of members fluctuates, but we are a group of around 18.

The Steering Committee authorizes spending money. In the last few months, two big funding supplements were (1) paying the travel expenses of several students to go to the CNPS Conference in Riverside, and (2) giving a big one-time donation to Bigfoot Trail Alliance (which among other things takes youth out into the mountains). In the normal budget, we also spent a lot of money on the research expenses of students, and of course on Chapter operations, such as evening programs and the annual Wildflower Show.

The Steering Committee also gives advice and consent on the appointment of new chairs, coordinators, and members of its own august body. We've had some noteworthy turnover in the last few months, and more is on the way. Highlights include appointing Ellen Cypher to be chair of programs, Peter Warner to be chair of field trips, Peter Warner again and John McRae to be co-chairs of the rare plant committee, and Carl Klarner to be chair of the invasive plants committee.

We are deeply aware that certain other people are continuing to serve, almost unwillingly, without a replacement in sight. Most obviously, we are looking for someone with extra space in their house to serve as the chair of the merchandise committee. Actually, perhaps the chair and the person with space could be different people, but at any rate, it has become an imposition to ask Karen Isa to continue on in the expansive duties that she has had for quite a number of years.

While I am thanking Karen, I'll mention some other stalwart workers. Ann Burroughs has finished a number of years taking care of the website. Dave Kim Imper was the president of the Chapter when I was in college and has served as the rare plants chair for a very long time. Steve Underwood led the invasive plant activities, and he is still pulling ivy on 3rd Saturdays.

In my early months in my current role, chairs of committees were encouraged to fill up the seats on their committees. Many new people are now in the 2nd valence serving on those committees. The Steering Committee is sort of the committee of everything and thus nothing, a team of leaders in the various operations of the Chapter. The work that has direct effects comes from the other committees, to name a few—the nursery crew, the conservation committee, the field trip committee, the wildflower show committee, and evening programs. I believe it is important for the many committees to be full of worker bees doing work.

From time to time, each committee reports back to the whole team of leaders. This is how we integrate the Chapter as a whole. I have tended to want agendas that have fewer items but one or two items that involve longer deliberations. I have encouraged Steering Committee members to submit written reports, when appropriate, so that we will have more time to share perspectives. This is not a radical change, and I'm not sure it has resulted in the chairs of any committees taking back to their committees a more fulsome understanding of the leaders' sentiments, but I'm going to keep on doing what I'm doing until the Steering Committee tells me to act otherwise.

## Field Trip Report: Clam Beach-Strawberry Creek end of Hammond Trail, February 22, 2026

By Carol Ralph

Here was proof that CNPSers love plants and love to be outdoors: After a night of fierce wind, with forecasts of rain possibly heavy, 11 CNPSers looked at the gray skies, put on their rain gear, and headed out to the Hammond Trail. Rain? What rain? We were busy looking at plants. After the parking area at the south end of Clam Beach, we walked south on the paved, level Hammond Trail. We looked at willows. The sprawling trees with large, male catkins and 2 stamens per flower on otherwise bare trees were Coastal Willow (*Salix hookeriana*)\*. Farther along was a willow with fresh, green leaves opening at the same time as the catkins, probably Pacific Willow (*Salix lasiandra*), though not the typical upright growth habit. By the cars two of us noticed a sapling willow, with leaves growing and catkins already blooming. Even these very young leaves had the silky underside distinctive of Sitka Willow (*Salix sitchensis*). That completed the set of the three common coastal willows!

We looked at ferns. In the Sitka Spruce swamp on the right just after the bridge over Strawberry Creek, crowns of long, graceful, triangular fronds of Spreading Wood Fern (*Dryopteris expansa*) were growing on rotting wood. Two *Polypodium* ferns were creeping over trunks or stumps. The large, thick fronds with prominent finger on the tip were Leather Fern (*P. scolieri*). The thinner, lighter fronds with long, tapered lobes were Licorice Fern (*P. glycyrrhiza*). Out in the dunes, among the European Beach Grass (*Ammophila arenaria*), thick, dark clumps were the other wood fern, Western Wood Fern (*Dryopteris arguta*). Also among the dune vegetation were green mats of the third polypody, Roadbank Fern\*\* (*Polypodium calirhiza*). Its fronds were thicker than those of Licorice Fern, and the lobes were rounded. We didn't see any Lady Fern (*Athyrium felix-femina*), which surely is there in the swampy place, but was "invisible," having dropped all its fronds for the winter.

Roadside weeds were another feature of the trail. A remarkably robust filaree or heron's bill (*Erodium* sp.) caught our eye. Everyone was familiar, unfortunately, with Three-cornered Garlic (aka White-flowered Onion, Wild Onion, Wild Garlic, etc.; *Allium triquetrum*). Klamath Weed (*Hypericum perforatum*) was harder to recognize than when it has flowers. Rosettes of feathery leaves distinguished Queen Ann's Lace/Wild Carrot (*Daucus carota*). The easy-to-identify grass, Rattlesnake Grass (*Briza maxima*) was easy even with just the dead stems and empty seed heads from last summer to look at.

We used up our morning just getting to the bench that is about a mile south of the parking area, and walked efficiently from there back to the cars, while talking and enjoying each other's company.

\*I am told that John Bair (aka Mr Willow) now says willows around Humboldt Bay may all be hybrids of *hookeriana* and *lasiolepis*. The situation is clearly fluid. His recommendation is to decide whether you want to call

them all *hookeriana* or all *lasiolepis* and move on to other things while the experts work it out.

\*\*Roadbank Fern is my name for this fern, which is conspicuous on roadbanks. It also is called Nested Polypody. (And this month Calflora calls it Licorice Fern.

## VOLUNTEERS NEEDED TO TRACK ALL FRUITING IVY IN EUREKA

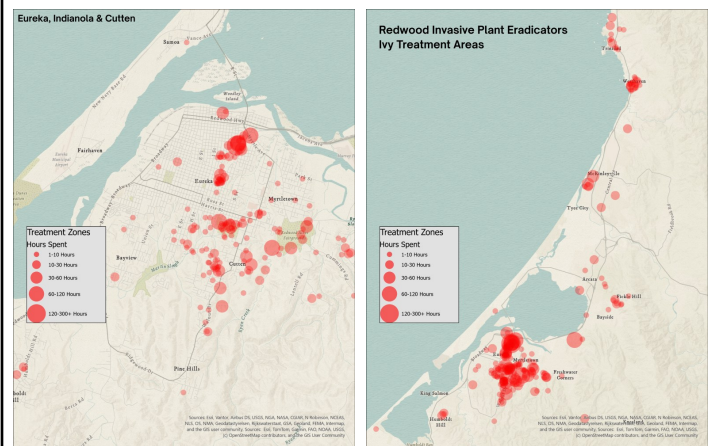
By Carl Klarnar

Redwood Invasive Plant Eradicators (RIPE) is on a mission to start controlling English ivy and English holly by killing vines and trees that are fruiting. Without the fruit, no new vines will establish. RIPE has already killed ivy vines on over 100 properties and has records of fruiting ivy on many more. RIPE teams of fit, energetic volunteers do the physical work of tackling the holly and ivy.

Now RIPE needs volunteers to document all the fruiting ivy and holly within Eureka city limits. Each volunteer will be assigned a zone, in which to go down every street and alley looking for fruiting ivy. Because fruiting ivy is generally up high, much of it can be found from public spaces. The documented addresses and brief descriptions of infestations will be entered into a spreadsheet.

The next step is to discover the property owner, by talking to neighbors or by using county records. Then an "ambassador" can talk with the owner and explain the free service that RIPE offers. Volunteers who help with these organizational tasks free up other volunteers to do the physical work.

This is your chance to have a big impact. No group has set out to eradicate all the fruiting ivy and holly in Eureka before, and it's a realistic goal that is attainable in the near future. We believe we have already eradicated a small but appreciable portion. Having a comprehensive list will allow us to optimize targeting and make authoritative statements about the portion of infestations we've taken out. That in turn will open the door to more resources and enable us to better advocate for policy change. The more help we have, the faster we can do it! To volunteer, contact <https://www.riperadicators.org/>



## Thank you's – from our Chapter's Nursery

The CNPS nursery is, as always, a very busy place as we tend to all our plants by transplanting, watering and cleaning up and feeding all the plants left from our recent, very successful spring plant sale, which we have for sale all summer. There is never any shortage of work to do at our nursery! I find it very satisfying to see all our plants grow from little seedlings into gallon-sized plants ready to go into local gardens.

Thanks to: Barbara Reisman, Carol Ralph, Karen Isa, Brian Dorman, Masako, Laura Guldin, Anita Gilbride-Read, Jessi van Floto, Rebecca Zettler, David Callow, Christy Wagner, Kit Mann, Ron Melin, Julie Neander, Kellie Johnson, Marcia Thorndike, Stephen Underwood, Callie Almand, Jessica Heiden, Alice Ford-Sala, June James, Dayna Mauer, Mark Mauer, Christiane Anderson, Sydney Carothers, Ian Jeffery, Ryan Stuart, Richard Beresford, Tim Gilbride-Read, Felicity Wasser, Wallis Robinson, Mary Bartlett, Dabid Garcia, Kim Marsden, Alex Marten, Evelina, Kathleen Clark, Ivy, Caspian Allbright, Soren Biel, Collee Hanretta, Deborah, Sean Stewart, John McRae, Sierra, Alisa, Darylla Hager, Rick Lermo, Celeste Thaine, Joan Richards, Olivia Brock, Elena, Maria, Crocus, Pam Nakamoto, Carol Reid, Gale Coonen, Marianne Aplini, Brennan Thompson, Sue Bryson, Cate Bryson, and Lee Mitchell for all of your help these past few months. These individuals have helped to start seeds, transplant seedlings, move plants up into sellable sizes for the sale, regularly watered and check our plant starts, made and put plant labels into plant containers, cleaned up, fertilized and weeded plants, cleaned and sterilized containers, picked up soil amendments and fertilizers, swept & vacuumed the hoop house floor to keep it clean, taken out the trash, washed gloves and towels, picked up any needed items for the nursery, such as bleach, hoses, nozzles or worked in the demonstration garden, whatever needed to be done, one of our volunteers helped out!

I would especially like to thank Barbara Reisman who regularly goes above and beyond, often goes to the nursery on days that are not scheduled to work on special projects, and getting things generally organized. Thanks so much Barbara for all your help!

We also have a dedicated team of volunteers led by Marcia Thorndike who water any plants that are not on a timed sprinkler system. They also check to make sure that the sprinklers are watering as they should and help us monitor the health of our plants. Thanks to Christy Wagner, Celeste Thaine, Sydney Carothers, and Kim Marsden for watering and to Marcia for covering as needed, no small task.

Many of you noticed our new, smaller labels. These labels are produced by Julie Neader on our new label printer. It took her time to figure it out, and she had to reenter all of their scientific and common names as our Excel spreadsheet did not work as we had hoped with the program for the labels, but once she entered the information, it was easy to get the labels printed. Julie has done a great job, and I am thankful that everything has worked

out. Rebecca Zettler is her backup for when they are out of town and provided labels needed for the spring plant sale as Barbara Reisman also did. We printed many 1,000's of labels in the spring, so everyone was very busy with the new machine. Thank you Julie, Rebecca and Barbara for printing our labels, I really appreciate that you all took this important task on!

Rebecca Zettler continues to be our pot washer superb! She regularly takes re-useable pots home to wash and then brings them back to get sterilized in our bleach container or comes into the nursery and washes and sterilizes pots on site. Thanks so much Rebecca for continuing to do this!! If anyone would like to do the same, just let us know via email. I really dislike having to purchase additional plastic containers for the nursery, which is why we try to re-use as many as possible!

A special thanks to the following volunteers for helping on special projects: Richard Beresford for fixing the break in our shade house; Ron & Joyce Melin, Callie Almand and Brian Dorman for helping me get plants out of my yard to be transplanted in pots at the nursery because of my injured knee and also to Anita Gilbride-Read, Celeste Thaine and Sydney Carothers for also offering to help.

Pip Printing in Downey Calif. continues to provide our banners and items printed on plastic. They recently printed up the "Nursery is closed" banner and the sign for the new Wetland Garden as well as informational signs about the Pocket Prairie Garden talk on campus that happened in May. Pip Printing gives us the 100% mom discount, thanks to my son Matt and his wife Nicole!

Kellie Johnson keeps the nursery website updated and current for us. For the spring sale she added all our inventory with links to Calscapes for each plant as well as providing all the needed information to sign up for and about the sale. Thanks Kellie, for doing this much needed task & for being such an important part of making our nursery a success!

I would also like to thank the volunteers who helped pick up plants from Samara Restoration. We picked up 1,000 plants for the spring sale and had them double stacked in every available place in trailers, trucks and cars. Thanks to Brian Dorman for bringing his trailer and truck and to Tim Gilbride-Read, Ron Melin, Alice Ford-Sala, Dayna and Mark Mauer, Richard Beresford and Anita Gilbride-Read for all helping to pick up plants. A special thank you to Dayna Mauer for dealing with all the participating nurseries, ordering their plant labels and updating spreadsheets of all the plants that we receive and sell for them.

As many of you saw at our plant sale, the garden that we planted at the nursery continues to grow and fill in and looks amazing, especially our Western Azalea, which had just started to bloom! We also have a new seasonal wetland garden, thanks to Paul Stiles, that was recently planted next to our demonstration garden. Richard saw many plant sale attendees in our garden looking at plants,

*(Continued on page 7)*

Continued from page 6

exactly what it was designed for. Thanks to everyone who stepped up to clean up and replant annuals in the garden while I am dealing with my knee. It looked great for the spring sale!

Thanks to everyone who helps at our chapter's nursery! We could not do this without all of you. All our volunteers work hard growing our plants so that we can fund the chapter's many activities, scholarships, as well as help to raise awareness as to the importance of planting native plants in our gardens and landscapes.

### Our Amazing Volunteers

It takes many volunteers working at the nursery to grow all the plants that we sell and to maintain our demonstration garden. This past fiscal year, 4/1/2025 to 3/31/2026, we had **over 80 volunteers work 4,441 hours at the nursery**, including for this year's past plant sales. This is an amazing number of volunteers and volunteer hours!

I would like to acknowledge the individuals who have put in over 100 hours of time at the nursery and the plant sales. This includes our core group of workday leaders: Barbara Reisman, 422 hours; Anita Gilbride-Read; 247 hours; Karen Isa, 222 and me, 723 hours. Barbara, Anita and Karen also take on other roles within our chapter for additional volunteer hours. Those who have given 100+ hours are David Callow, 133 hours; Dayna Mauer, 136 hours; Jessica Heiden 108 hours; Laura Guldin, 123 hours; Rebecca Zettler, 138 hours; Ryan Stuart, 104 hours; Alice Ford-Sala, 129 hours and Marcia Thorndike, 271 hours, our Volunteer of the Year. She often works multiple days as well as overseeing and covering for members of the watering team. Thank you, Marcia, for all your work at the nursery, you always go above and beyond! Thanks to everyone for all their help at the nursery.



Marcia at work! photo by Barbara Reisman

If you would like to volunteer, you can contact us via email [northcoastcnps@gmail.com](mailto:northcoastcnps@gmail.com) or come by on a Wednesday, Friday, or Sunday between 10 -1, our normal work hours at the nursery.

### Community Plant Donations

The chapter nursery regularly donates plants to non-profits and local community groups. Since the beginning of the year, we have donated to: Joanne Kerns' talks at the Sequoia Park Zoo, Jefferson Community Center, Coastal Grove Charter School, the Humboldt Animal Rescue Team, the City of Eureka and the Northcoast Environ-

mental Center to help with fundraisers and to share plants with the community.

### Spring Plant Sale Thanks

After a busy May Day Friday setting up pop ups, tables and chairs, pricing, grooming, arranging and placing informational signs, industrious volunteers prepared the nursery for the Spring plant sale. Some customers were new to the world of native plants and some go back to the beginning of our chapter in the 1980's when the plants were grown in member's back yards. We have come a long way since those days, under the steady guidance of our nursery manager, Chris Beresford.

Part of the proceeds from these sales goes back into the nursery to buy soil, seeds, pots, etc. It also enables us to award grants to botany students to further their research, put on monthly programs and field trips for the community, and support local organizations

We want to extend a big thank you and recognition to:

**Behind the scenes** helping with labels, signs, outside nurseries, advertising, volunteer recruitment and numerous details: Chris Beresford, Anita Gilbride-Read, Dana Mauer, Julie Neander, Samantha O'Connor, Barbara Reisman and Paul Wilson.

**Friday set up volunteers:** Callie Almand, Christiane Anderson, David Callow, Alice Ford Sala, Tim Gilbride, Anita Gilbride-Read, Susan Halpin, Karen Isa, Kit Mann, Kim Marsden, Rita Quade, Barbara Reisman, Joan Richards, Susan Thorsell, Jesse vanFloto, and Rebecca Zettler.

**Parking Volunteers:** Ross Beveridge, David Callow 2 shifts, Brian Dorman, Nancy Ihara, Mark Mauer, John McRae 2 shifts, Ron Melin, Nadja Quiroz, Paul Wilson.

**Greeters:** Nancy Brockington 2 shifts, Susan Halpin, Joan Richards.

**Advisors:** Ashley Dickensen & Lola, Tom Lisle, Kipp Pow, Bill Rodstrom, Randi Swedenburg, Molly Travis 2 shifts.

**Helpers:** Soren Biell, Brian Dorman, Alice Ford Sala, Sharon King 2 shifts, Kate Rowe, Marcia Thorndike, Jesse vanFloto,

**Plant Tally People:** Callie Almand, Laura Guldin, June James, Dayna Mauer, Carol Reid, Kate Rowe, Sean Stewart, Brennan Thompson and Marcia Thorndike.

**Cashiers:** Anita Gilbride-Read 4 shifts and Barbara Reisman 4 shifts

**Volunteer Hospitality:** Christiane Anderson, Cindy Evens and Rebecca Zettler

**Merchandise Table:** Gail Coonen, Karen Isa 4 shifts, Elaine Hanson, Kim Marsden 2 shifts, and Carol Mone.

And of course, guiding the ship and setting the course is our tireless nursery manager Chris Beresford who is, of course, a volunteer.

## VOLUNTEERS IN ACTION

Everything we do is with volunteer labor. Every job, small or large, is important for getting things done. We appreciate our many, talented, generous volunteers. You can be one too! Contact Carol at 707-822-2015 or [theralphs@humboldt1.com](mailto:theralphs@humboldt1.com)] or Tony at [tlabanca@sbcglobal.net](mailto:tlabanca@sbcglobal.net).

### Thank you!

**Gabe Cashman** for years of accurately recording and disseminating the action at our monthly steering committee meetings, answering "contact us" requests, learning how to use our OneDrive account, and being an owner of our Groups.io.

**David Callow** for years of updating, upgrading, revising, planting, and retrieving the outdoor signs for the Wildflower Show. A behind-the-scenes, very effective job well done!

**Gail Coonen** for years of adding to the cheer of our evening programs by serving refreshments.

**Alayana Fiel** and **Zach Bates** for helping set up, clean up, and staff the merchandise/welcome table at the evening programs.

**Andrea Taylor** for organizing our presence at Godwit Days; **Karen Isa** for setting up an attractive, informative display; **Karen Isa, Andrea Taylor, Kim Marsden, Becky Deja, Carol Ralph, Nancy Brockington, Elaine Hanson, Barbara Reisman,** and **Joann Kerns** for being friendly, engaging staff at the table during this fun event.

**Andrea Taylor, Carol Ralph, Pete Haggard,** and **Barbara Reisman** for leading native plant walks at Godwit Days.

**Peter Warner, Paul Wilson, Rita Zito, Ellen Cypher, Joann Kerns,** and **Carol Ralph** for leading field trips. **Peter Warner** especially for organizing a stupendous trip to Eel River Canyon Preserve.

**Tony LaBanca** for processing Yes-I-Would-Like lists and scouting new talent for our many jobs.

### Welcome Aboard!

**Nathan Tallman** as Secretary.

**John McRae** and **Peter Warner** as co-chairs of the Rare Plant Committee

**Peter Warner** as chair of the Field Trip Committee

**Carl Klarner** as chair of the Invasive Plants Committee

## HELP NEEDED

Contact Carol or Tony

**Merchandise Sales.** Our popular t-shirts and the beautiful, educational posters from state CNPS bring our chapter revenue and also spread the word about native plants. We need a person or people to store them and supply them to about 6-8 outreach events per year plus the 9 evening programs. Tracking the inventory is important too, to know when to re-order.

**Outreach.** Our attractive table or booth at 3-4 large, public events per year plus our chapter's two plant sales and one Wildflower Show, are an important part of raising public awareness about native plants. We need a person to maintain the inventory of display items and handouts, supply them to each event, and help set up the display.

**Our Native Plant Nursery and Plant Sales** have diverse jobs. Contact [northcoastcnps@gmail.com](mailto:northcoastcnps@gmail.com).

**The Wildflower Show,** an amazing, beautiful, fun event has tasks for anyone! To help plan for 2027 contact us now! [theralphs@humboldt1.com](mailto:theralphs@humboldt1.com)

**Refreshments.** Bring finger-food to an evening program or special events (Wildflower Show or Plant Sales). Small jobs like this have a big effect!

**YouTube Manager.** Transfer the Zoom-recorded evening programs to our YouTube channel.

**Alternate Delegate to Chapter Council.** Representatives from all the chapters meet quarterly to share what's happening and develop state-wide policies. We need a second person interested in attending for our chapter.

**Any Committee.** If any committee sounds interesting to you, ask about it. It's not a committee without people!

---

Did you know?? You can watch Zoom recordings of all of our past Evening programs on our YouTube channel here:

<https://www.youtube.com/@cnpsnorthcoast2680>

## Field Trip Report – Eel River Canyon Preserve

By Peter Warner, photos by Rita Zito

A North Coast Chapter field trip to the Eel River Canyon Preserve in southwest Trinity County, in late April, provided 19 of us lasting memories of camaraderie, sweeping ridgetop vistas of slopes awash in color, lush coniferous forests and oak woodlands, turtle ponds, and rushing creeks. 15 North Coast members were joined by 3 members from Sanhedrin and Dorothy King



Young chapters. As well, we were honored to include new friends from the Wailaki (“north language;” Kinist’ee “the people”) community; the Wailaki long lived and thrived on this land, and our ancestral hosts graciously shared elements of their cultural traditions. Our 4 days of adventure took us along winding mountain roads, through dazzling wildflower displays, delighting in avian diversity, exploring the Eel River and Kekawaka Creek, and sharing meals prepared by our group.



## Rohner Park Ivy Bash

By Steve Underwood

Please join us, the merry band of ivy bashers (the No Ivy League), at the Fireman’s Pavilion in Rohner Park on the **Third Saturday of Every Month at 9 a.m.** Next one is **June 20<sup>th</sup>**. Bring gloves or you can borrow a pair. Bring water for two hours of fun bashing ivy. Sponsored by the North Coast Chapter of the California Native Plant Society and the Fortuna Parks & Recreation Department. Heavy rain/ high winds cancel. Contact Steve at [unde1942@gmail.com](mailto:unde1942@gmail.com) with questions.

## Wetland Garden

By Paul Stiles

At the CNPS Northcoast Nursery, the concrete basin the garden started as was a kingdom of weeds. Tall grasses, thatchy grasses, and angry prickles covered the floor of the concrete square. To eliminate these weeds (and the seed bank of weeds) we needed to start fresh. With the help of the Cal Poly Humboldt rowing team we hauled away a few cubic yards of green waste and hauled exactly one dumptruck of freshly sifted topsoil into the concrete basin, one wheelbarrow at a time.

Our basin had a concrete floor with just enough cracks in it to hold onto rainwater for a few days, but not so long

that it would become a turtle pond, which we observed before any planning started. This is an important step to any garden, knowing the micro-conditions of your space: how many hours of sunlight and from which direction? Does water pool or quickly soak into the ground? Which wildlife are likely to eat your plants?

This wetland garden was inspired by the natural world where such habitat persists (or been restored). A stout hill sits in the middle (off-center), with low points in all corners. Plants were placed higher or lower on the contour of the slope based on the amount of water they preferred, and closer to or farther from the shadow cast by a building to the south based on the amount of sunlight they preferred.

Along the coast of the Pacific Northwest you find incredible coastal meadows. The giant grasses that constitute the bulk of these meadows are Pacific reedgrass and coastal tufted-hairgrass. Grasses of unusual size also are great at combating weeds, especially when combined with shorter spreading grasses such as the native red fescue. A third part is an excellent seed mix of aggressive pioneer species such as meadow barley and California brome. The last step is to add water-loving wildflowers!

Make sure the whole thing gets drowned a few times a week for the first year while things get established. The easy way is to put plants in the ground at the beginning of the rainy season, generally starting in early December.

The new garden is still in its first year of growth, and the many grasses planted are just getting going, but many are looking great so far! This project was made possible through the help of volunteers and donations from the plant growing team. Expect to see great (and colorful) things in the new garden in the future!

All plants used in this project can be found at the CNPS nursery, Contact Paul for a list or more information through the CNPS nursery.

Scraped to the floor



After-plants are growing!

## THANK YOU NEW MEMBERS

Jane Monroe  
Carol Reid  
Eric Ruud  
Susan Clark  
Aaron Valeska  
Sierra Vasinthascha  
Patricia Jordan French  
January Hawkes  
Andrea Garcia  
Melati Kaye  
Martha Carlson  
April Koepke  
Owen Lenox  
Savannah Stewart  
Elizabeth Uemura  
Emil Doyle  
Webster Marquez  
Soren Biel  
Anise Dellith Moser  
Valerie Hanelt  
Rosemary Walter

## THANK YOU RENEWING MEMBERS

Tracy O'Connell	Tamar Danufsky
Jeff Dillion	Richard Hansis
Katherine White	Colleen Godwyn
Mary Alward	Claire Perricelli
Jorie Emory	Oona Paloma
Jill Barwick	Deborah Cherkas
Frank Millelzcik	Josh Koepke
Ann Knight	Caitlin French
Erik Jules	Sheila Bergum
Nathan Tallman	Jessica Wilson
Joan Sikkens	Donica Mensing
Sarah Borgeson	Terry Allaway
Ann Smith	Teresa Renaker
Charles Hudson	Karen Hildebrand
Jennifer Olson	Katrina Henderson
Gillian Oglesby	Gabrielle Levine
Blythe Reis	Rachel Globus
Christopher Grimes	Bojan Ingle
Jayne Coovert	Colette Beaupre
Janet Stock	Christine Crown
Claudia Norby	Patricia Dougherty
Bethel Laborde	Jennifer Hanson
Mary Rand	Bret Harvey
Paul Abels	Dominic Dipaolo
Amy Livingston	Ingrid Bailey
Ann Walsh	Sallie Grover
John Springer	Ellen Watrous
Igal Levy	Wayne Clark
Jon Cluff	Carolyn Cooley
Kristina Marin	Sally Buechel
Diana Tinker	Lee Mitchell-Brown
Vernon Wiersma	
Kathy Pitts	
Evan Merz	

Caroline Martorano  
Jonathan Hill  
Patricia Kerfoot  
Marla Knight  
Dudley Miller  
Pamela Nakamoto  
Patricia Pomidor  
Tom Pratum  
Tempra Board  
Luiza Flynn-Goodlett  
Joaquin Hale  
Maria Krenek  
Juliet Malik  
Jackson Peyton  
Genevieve Schmidt  
Christine Aus  
Patricia Sennott  
Jay Jacobs  
John Scharffenberger  
Joyce Houston  
Jeanne Tolmasoff  
Chris Jenican-Beresford  
Elaine Weinreb  
Susan Libonati-Barnes  
Cameron Jones  
Tiana Williams-Claussen  
Elizabeth McGee-Houghton  
Helen Constantine-Shull

Susan Whaley  
Anna Replogle  
Ed Schreiber  
John McRae  
Nancy Ihara  
Michele Kamprath  
Sandi Sommer  
Adrian Klarner  
Patricia Brennan  
Zachary Kinman  
Nathan Thuma  
David Ford  
Cinderita Courey  
Janet Macher  
Joan Carpenter  
Rachel Werling

## MEMBERSHIP BENEFITS

**Support these local businesses and receive discounts on your purchases with proof of North Coast membership.**

\*Greenlot Nursery, 10% discount on plants, 443-9484

\*Lost Foods Native Plant Nursery: 10% discount on plants, 268-8447, LostFoods.org

\*Mad River Gardens: 10% discount on plant purchases, 822-7049

\*Miller Farms: 5% discount on plant materials, 839-1571

\*Pierson's Garden Shop, 10% discount on all garden shop items (except sale or non-discountable items— please ask staff before going to register), 441-2713

\*Samara Restoration LLC, 10% discount on plants, 834-4379 samararestoration.com.

## STEERING COMMITTEE MEMBERS/CONTACTS

President & Publicity Chair	Paul Wilson
Vice President	Andrea Taylor
Secretary	Nathan Tallman
Treasurer	Anita Gilbride-Read
Membership	Tristan Cole
Chapter Council Delegate	Larry Levine
Invasive Plants	Carl Klarner
Native Plant Gardening	Pete Haggard
Native Plant Consultation	Celeste Thaine
Nursery Manager	Chris Beresford
Conservation	Joann Kerns
Evening Programs	Ellen Cypher
Hospitality	Gail Coonen
Field Trips and Plant Walks	Peter Warner
Rare Plants	John McRae, Peter Warner
Natural Communities	Tony LaBanca
Newsletter Editor	Barbara Reisman
Social media	Laura Sanchez
Merchandise Sales	Karen Isa
Wildflower Show	Larry Levine
Chapter Council Delegate	Larry Levine
Conservation Issues Analyst	Joan Tippetts
Workshops & Scholarships	Gordon Leppig
Representative to NEC	Joan Tippetts

## COMMUNICATIONS

Issue	Submission Date	Print Date	Announce Events In
Winter	November 15	December 1	Dec, Jan, Feb
Summer	February 15	March 1	Mar, Apr, May
Summer	May 15	June 1	June, Jul, Aug
Fall	August 15	September 1	Sept, Oct, Nov

E-mail newsletter articles, factoids, tidbits, etc. to the Newsletter Editor by the submission date.

Articles should generally be no more than 1,000 words and images can be any size and in these formats: JPG, JPEG, BMP, GIF, or PNG (note preferred location in the article and send image as separate attachment).

North Coast CNPS members have four ways to share information with each other:

- **Darlingtonia Newsletter** (quarterly),
- **Chapter website:** [www.northcoastcnps.org](http://www.northcoastcnps.org)
- **E-mail lists:** To subscribe, go to < [northcoastcnps.groups.io/g/activities](http://northcoastcnps.groups.io/g/activities)>
- **Like us on Facebook** [www.facebook.com/NorthCoastCNPS](http://www.facebook.com/NorthCoastCNPS)

## NATIVE PLANT CONSULTATION SERVICE



Are you wondering which plants in your yard are native? Are you unsure if that vine in the corner is an invasive exotic? Would you like to know some native species that would grow well in your yard?

The North Coast Chapter of the California Native Plant Society offers the Native Plant Consultation Service to answer these questions and to share our experiences gardening with natives. This service is free. We hope it will inspire you to join CNPS or make a donation.

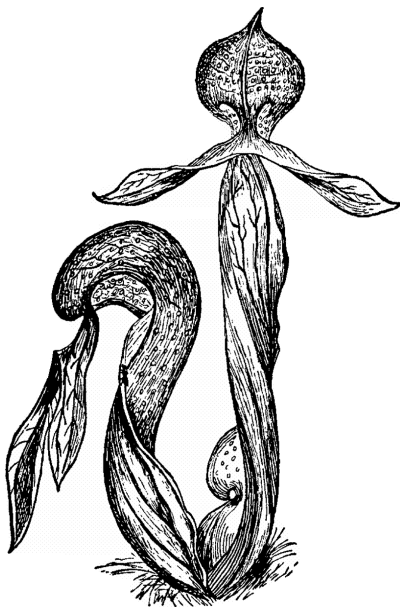
Contact our coordinator at [nc.cnps.consult@gmail.com](mailto:nc.cnps.consult@gmail.com) to put you in touch with volunteer consultants who will arrange a visit to look at what you have and help choose suitable plants for your garden. Please be patient as we are all volunteers!

**California Native Plant Society  
North Coast Chapter  
P.O. Box 1067  
Arcata, CA 95518**

**NONPROFIT  
ORG.  
U.S. POSTAGE  
PAID  
Permit No. 30  
Eureka, CA 95501**

**CHANGE SERVICE REQUESTED**

## *Darlingtonia*



Visit us at  
[northcoastcnps.org](http://northcoastcnps.org)

## CALENDAR OF EVENTS

### June

- ◆ 6-7 Field Trip
- ◆ 14 Day Hike

### July

- ◆ 4 Walk
- ◆ 25 Walk

### August

- ◆ 8 Walk
- ◆ 14-16 Field Trip
- ◆ 15 Workshop